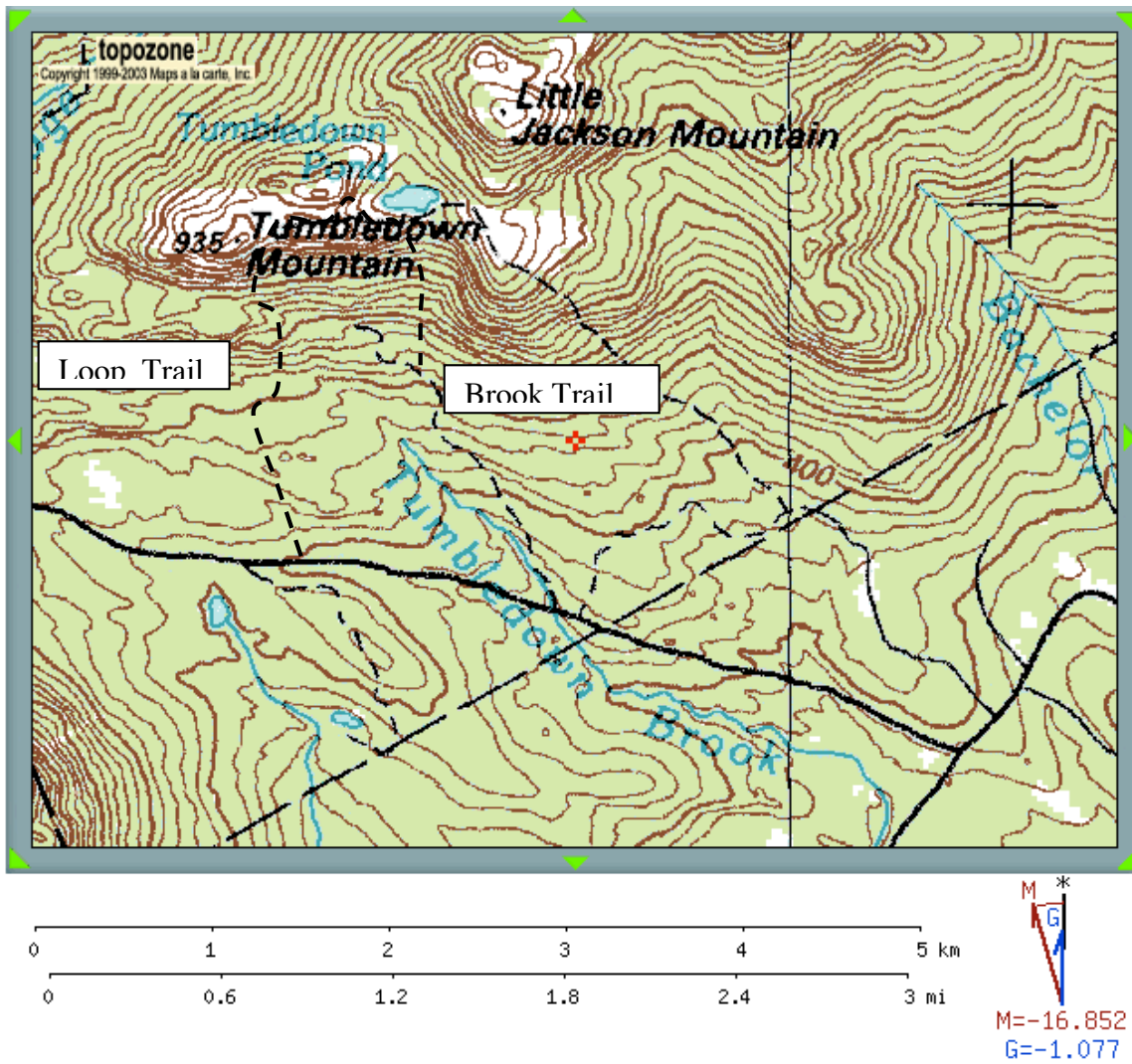


Tumbledown Mountain, Weld, ME



Maps should not be used for navigation. Please refer to USGS maps and AMC guides for complete map and trail information.

Difficulty: Moderate for inexperienced teenagers.

Location: Follow Rt. 142 north from Weld. Follow to the Byron Notch Road at Weld Corner. The loop trail leaves Byron Notch Rd about 6 miles from this junction. The Loop Trail leaves directly opposite a clearing on the other side of the road. It blue blazed. To begin on the Brook Trail look for the trail head about 4.5 miles from the Weld Corner junction with Rt. 142. The Brook Trail is also blue blazed.

Distances up the Loop Trail and down Brook Trail(from AMC guide):

-From Byron Notch Rd to saddle and junction with Tumbledown Ridge Trail 1.9 mi.

-Tumbledown Ridge Trail to Tumble down pond 0.6 mi

-Tumble down pond along Brook Trail to Byron Notch Road 1.5 mi

-Walk west from Brook Trailhead to Loop Trailhead along Byron Notch Road 1.5 mi

Elevation Gain: From Trail head to Tumbledown East summit 1700 feet

Notes: This hike provides moderate hiking that includes some open summits, scrambling over boulder fields, and a beautiful pond at the top. It makes a nice round trip when both the Loop Trail and Brook Trail are combined. However, a 1.5 mile walk must be made along the Byron Notch Road if two vehicles are not used. Bringing one back up vehicle that can be used to retrieve the van or bus is the way I have done this in the past. There is water along both trails and at the pond. The Brook Trail is steep for the first mile of descent.

Overnight Possibilities: I have not stayed over night in this area except in the winter. Mt Blue State Park is located here and provides year round camping. The phone off-season is (585-2261) and during the park season, June to labor Day, is (585-2347). Group sites are available.