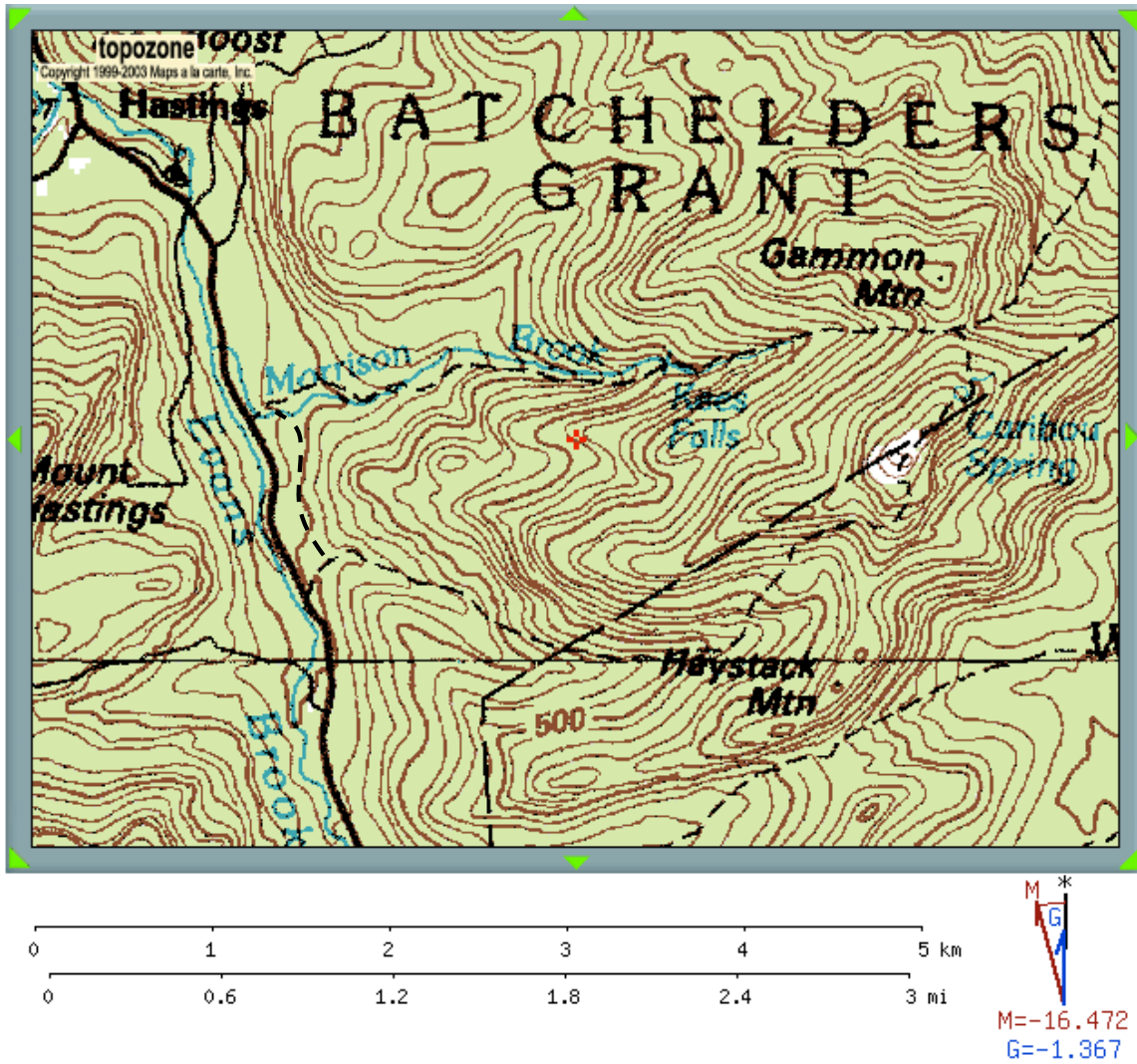


Caribou Mountain, Evans Notch Region



Maps should not be used for navigation. Please refer to USGS maps and AMC guides for complete map and trail information.

Difficulty: Easy to moderate for inexperienced teenagers.

Location: Follow Rt. 113 south from Gilead and Route 2. About 6 miles south on Route 113 look for the trailhead parking on the left (east side of 113).

Distances (from AMC guide): Caribou Trail to Mud Brook Trail 2.9 mi
Caribou Trail to Caribou Mtn. 3.5 mi
Caribou Summit to parking via Mud Brook Trail 3.8 mi

Elevation Gain: From Trail head to Caribou summit 1900 ft.

Notes: This is a terrific September or late May hike. It is located in Evans Notch Region. The trip can be made as round trip via the Caribou Trail and the Mud Brook Trail (southerly trail on map above). The trails offer several excellent views along the way to the south and southwest, while the brooks on each leg offer waterfalls and easy access to water. If hiking in spring, be sure that ground has begun to firm up, as both trails can be very wet during mud season.

Overnight Possibilities: I have not stayed at the shelter located in the col between Gammon and Caribou mountains. However, I have never seen it full on several different day hikes. It would be a good first trip for inexperienced backpackers. When hiking as a day hike, I have stayed at Cold River and Basin Campground. Both of these accept reservations. These two areas are located only 2 miles north of the trailhead. My favorite place to stay when in the Evans Notch region is at Wild River Campground. It is located five miles down the Wild River Road, which can be found 2 miles south of the northern end of Rt. 113. This campground is on a first come first serve, but sees much less traffic in the fall.